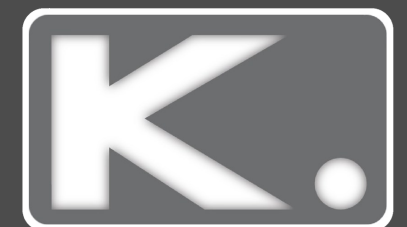
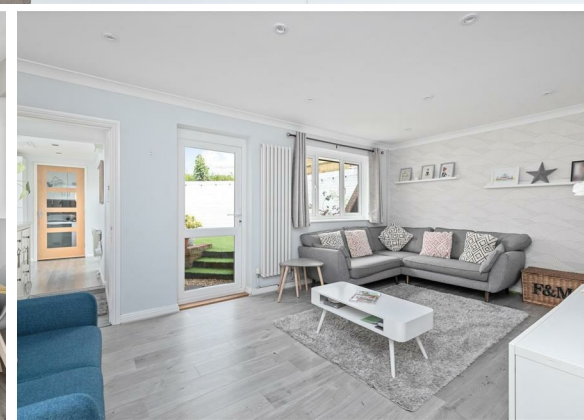
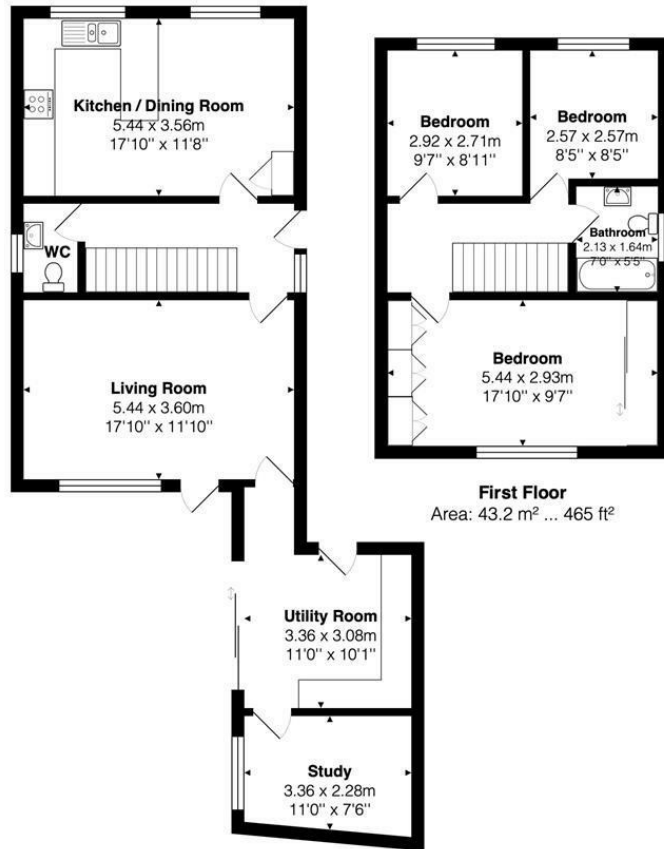




**3 Bed
House - Detached
located
in Portslade**

Price Guide £500,000





Ground Floor
Area: 70.4 m² ... 758 ft²

First Floor
Area: 43.2 m² ... 465 ft²

Total Area: 113.7 m² ... 1224 ft²

Energy Efficiency Rating		Current	Potential
Very energy efficient - lower running costs			
(92 plus) A			83
(81-91) B			
(69-80) C		72	
(55-68) D			
(39-54) E			
(21-38) F			
(1-20) G			
Not energy efficient - higher running costs			
England & Wales		EU Directive 2002/91/EC	

DIRECTIONS

CONTACT

Kendrick Property Services - Brighton
10-12 Lewes Road
Brighton
East Sussex
BN2 3HP

E:
sales@kendrickpropertyservices.co.uk
T: 01273 600162
www.kendrickpropertyservices.co.uk

